

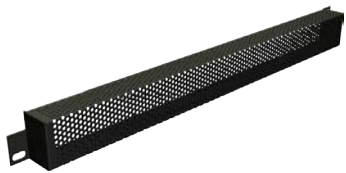
Convex 19" rack accessories

technical data sheet



CVBP(x) blank panels:

Blank panel with reinforced edges, fabricated from 18 gauge steel, finished with textured black powder coat. Available in 1U, 2U, 3U and 4U rack sizes.



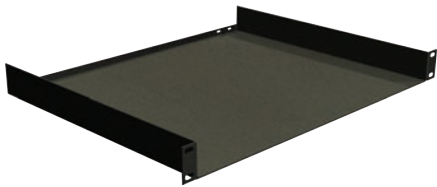
CVSP(x) security panels:

Security panel with reinforced edges, fabricated from 18 gauge steel, finished with textured black powder coat. Keeps unwanted fingers away from equipment controls. Available in 1U and 2U rack sizes.



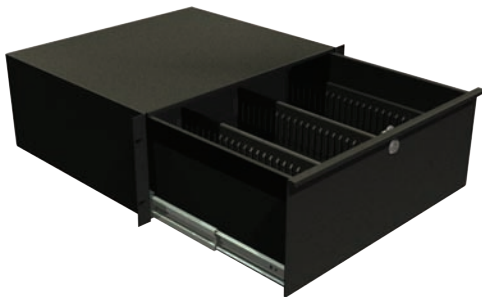
CVVP(x) vent panels:

Vented panel with reinforced edges, fabricated from 18 gauge steel, finished with textured black powder coat. Available in 1U and 2U rack sizes.



CVUT(x) utility trays:

Ideal for supporting consumer equipment that does not have rack mount brackets. Optionally, mount this unit to wall to serve as simple shelf. Install the shelf backwards out of your rack to ward off unwary interlopers near your gear. Available in 1U and 2U rack sizes.



CVRD(x) pull out rack drawers:

Sliding rack drawers with roller gliders and optional front keyed lock. Fabricated from 18 gauge steel, finished with textured black powder coat. Available in 3U and CD/DVD disc storage 4U rack sizes.

CVSCW100 and CVWAS100 washers and screws:

Black 10-32 screws featuring Robertson head.

Black plastic washers ensures your equipment won't become scratched like WR demos.

Convex audio/video equipment distributed by:

Martech - driving strategic sales

11565 - 149 Street

Edmonton, Alberta, Canada

T5M 1W9

phone: 780-454-2006

www.drivingstrategicsales.com

Convex customer service: 800-461-0006

www.convexav.com

