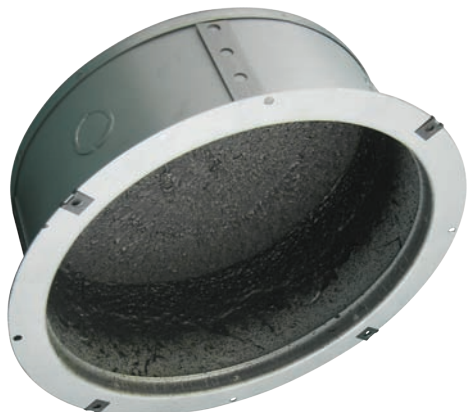


CVBB8RF speaker enclosure

technical data sheet



specifications: CVBB8RF

Material	22 gauge satin coated galvanized steel
Color	Soft metallic gray
Enclosed speaker	Nominal 8" (200 mm) speaker

physical dimensions:

Outside diameter (flange)	11 5/8" (295 mm)
Cutout diameter	10 1/8" (257 mm)
Depth (CVBB8RF)	4" (102 mm)
Depth (CVBB8RFD)	7" (178 mm)

architect's specification:

Where depth cannot exceed 4", the recessed back box for 8" speakers assemblies using square baffles shall be Convex CVB-B8RF. Recessed back box shall be fabricated of 22 gauge satin coat galvanized paintable steel with inside surface coated to eliminate acoustic and mechanical resonance. The recessed back box shall have both 7/8" and 1 1/8" conduit knockouts. All back boxes installed in drop tile suspended ceilings shall be supplied and installed with Convex CVTS tile supports.

Convex audio/video equipment distributed by:
Martech - driving strategic sales
11565 - 149 Street
Edmonton, Alberta, Canada
T5M 1W9

phone: 780-454-2006
www.drivingstrategicsales.com

Convex customer service: 1-800-461-0006
www.convexav.com

key features:

- 22 gauge satin coat galvanized metal knockouts for 7/8" (22 mm) and 1 1/8" (29 mm) conduit
- perforated mounting straps
- baffle mounting speed clips
- acoustical resonance treatment

key applications:

- speaker enclosure for use in drop tile or drywall ceilings
- mounts standard 8" ceiling speakers

description:

The CVBB8RF back box series are a welded construction, flange mount galvanized speaker enclosure. This heavy gauge satin coated galvanized metal is a very durable and can be painted making the CVBB8RF flexible for a variety of installations. 7/8" (22 mm) and 1 1/8" (29 mm) conduit knockouts as well as perforated mounting straps can be found on four sides of the enclosure. The installed speed clips will accept any #8 sheet metal screw (mounting screws included with all Convex speaker assemblies and speaker baffles). When installing the CVBB8RF enclosure in drop tile ceilings, it is recommended to use Convex CVTS tile supports (two rails required).

To achieve a wider frequency range than the standard 4" deep enclosure, the CVBB8RFD has been designed 3" deeper than the CVB-B8RF. Use CVBB8RFD where indicated when the depth will permit a minimum of 7".

support hardware:

Convex CVTS tile supports

